



DR GRIP

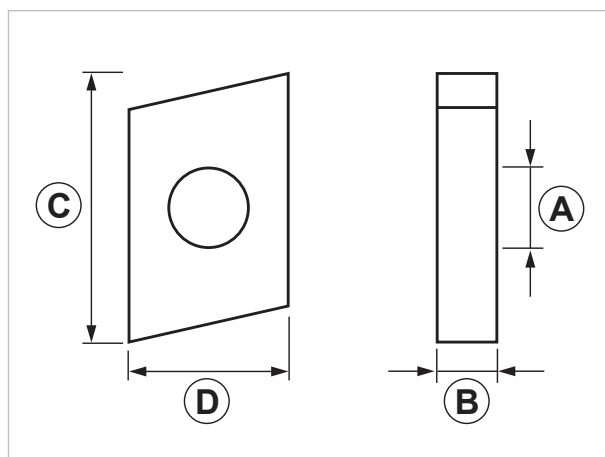
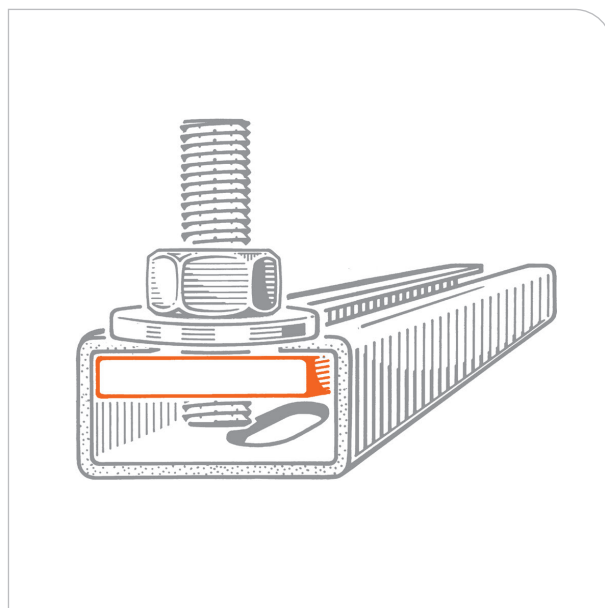
Grip sliding nut for light duty strut channels

APPLICATION

Connection part for PF/PF1/PF7/PF2 strut channels.

FEATURES AND BENEFITS

- > It can be inserted **anywhere** in the strut channel by making a **simple 90° rotation**.
- > The inner nut - on the side that touches the strut channel - is **knurled** in order to prevent sliding.



| COD | TYPE | A | B | C | D |
|--------|------------|-----|---|----|----|
| 162001 | DR 6 GRIP | M6 | 4 | 27 | 16 |
| 162101 | DR 8 GRIP | M8 | 6 | 27 | 16 |
| 162201 | DR 10 GRIP | M10 | 6 | 27 | 16 |



MATERIALS TECHNICAL DATA

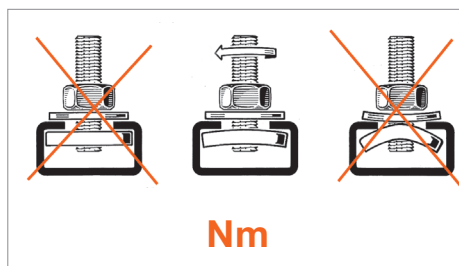
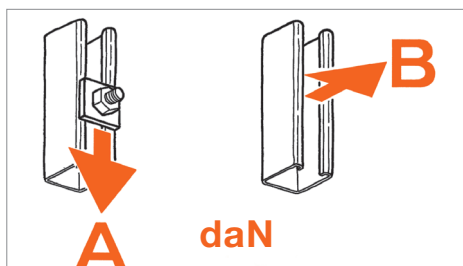
MATERIAL

Steel DD11 EN 10111 with electro zinc plating 7-8 μm

RECOMMENDED LOADS

Recommended load is the average resistance loads with a safety coefficient. 1 daN=1 kg.

A - B = Recommended loads **Nm** = Tightening torque



| | PF | | | PF1 | | | PF7 | | | PF2 | | |
|-------|----|-----|----|-----|-----|----|-----|-----|----|-----|-----|----|
| TYPE | A | B | Nm | A | B | Nm | A | B | Nm | A | B | Nm |
| DR 6 | 50 | 150 | 13 | 55 | 200 | 13 | 55 | 200 | 13 | 55 | 200 | 13 |
| DR 8 | 50 | 150 | 13 | 55 | 200 | 13 | 55 | 200 | 13 | 55 | 200 | 13 |
| DR 10 | 50 | 150 | 13 | 55 | 200 | 13 | 55 | 200 | 13 | 55 | 200 | 13 |

PACKAGING

In polyethylene bags

RELATED ITEMS

- > Brackets and strut channels
- > Connection parts

DATE 09-2021 REV. 00

The current technical data sheet substitutes and cancels the previous ones. Information correspond with our current knowledge of the product. It cannot lead us to any sort of responsibility or compensation. Gia S.p.A. reserves the right of changing technical features and molds without notice.

Gia S.p.A. – Via Sac. A. Cremona, 12 – 28069 Trecate (NO) – www.gia.it

