

## DR GRIP

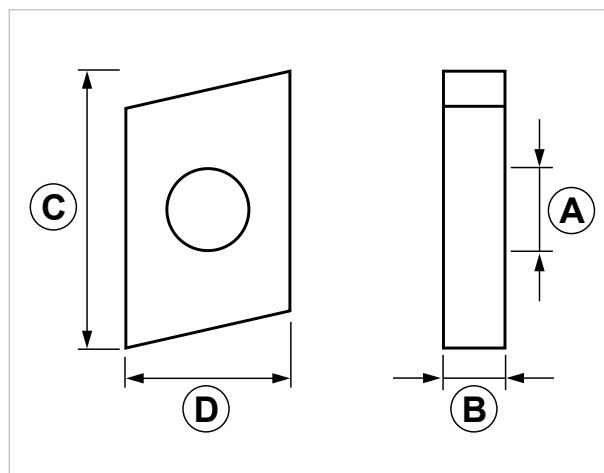
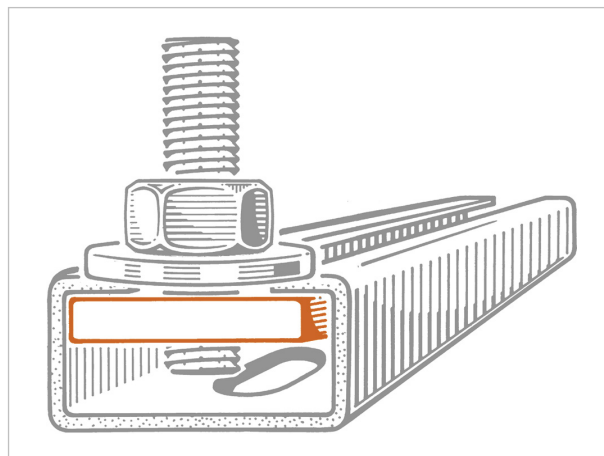
### Grip sliding nut for light duty strut channels

#### APPLICATION

Connection part for **PF / PF1 / PF7 / PF2** strut channels.

#### FEATURES AND BENEFITS

- > It can be inserted **anywhere in the strut channel** by making a **simple 90° rotation**.
- > The inner nut - on the side that touches the strut channel - is **knurled in order to prevent sliding**.



COD	TYPE	A	B	C	D
162001	DR 6 GRIP	M6	4	27	16
162101	DR 8 GRIP	M8	6	27	16
162201	DR 10 GRIP	M10	6	27	16

# GRIP LIGHT DUTY FIXING SYSTEM

## CONNECTION PARTS

### MATERIALS TECHNICAL DATA

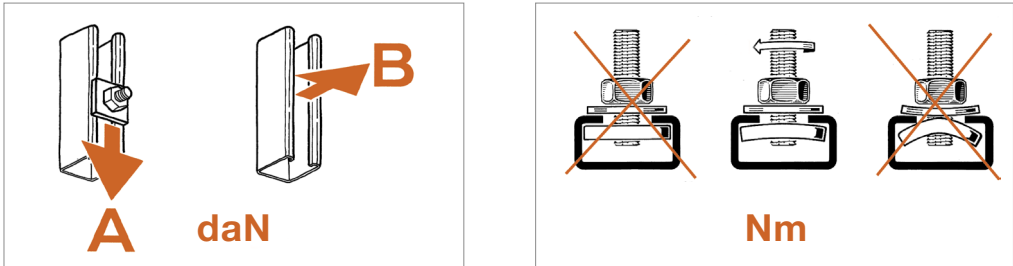
#### NUT

Steel DD11 EN 10111 with electro zinc plating 7-8 µm

### RECOMMENDED LOADS

Recommended load is the average resistance loads with a safety coefficient. 1 daN=1 kg.

**A - B** = recommended loads    **Nm** = Tightening torque



TYPE	PF			PF1			PF7			PF2		
	A	B	Nm	A	B	Nm	A	B	Nm	A	B	Nm
DR 6 GRIP	50	150	13	55	200	13	55	200	13	55	200	13
DR 8 GRIP	50	150	13	55	200	13	55	200	13	55	200	13
DR 10 GRIP	50	150	13	55	200	13	55	200	13	55	200	13

### PACKAGING

In polyethylene bags

### RELATED ITEMS

> Brackets and strut channels

### DATE 06-2023 REV. 01

The current technical data sheet substitutes and cancels the previous ones. The details provided fit our current knowledge of the product. It cannot lead us to any sort of responsibility or compensation.

Gia S.p.A. reserves the right of changing technical features and molds without notice.

This company is subject to “Ethica Global Investments S.p.A.” management.

Gia S.p.A. – Via Sac. A. Cremona, 12 – 28069 Trecate (NO) – [www.gia.it](http://www.gia.it)