

DMPR

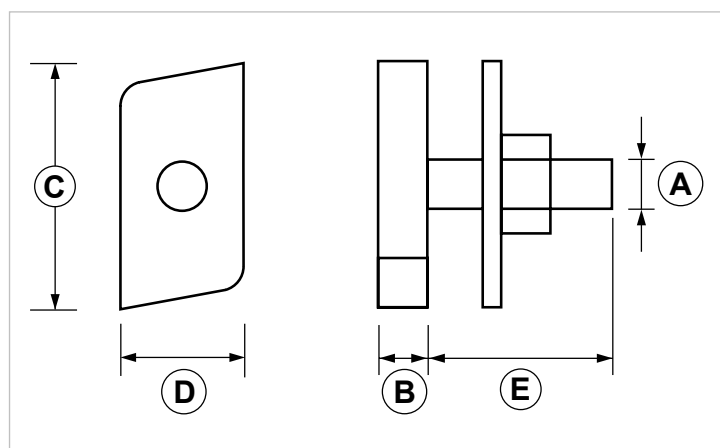
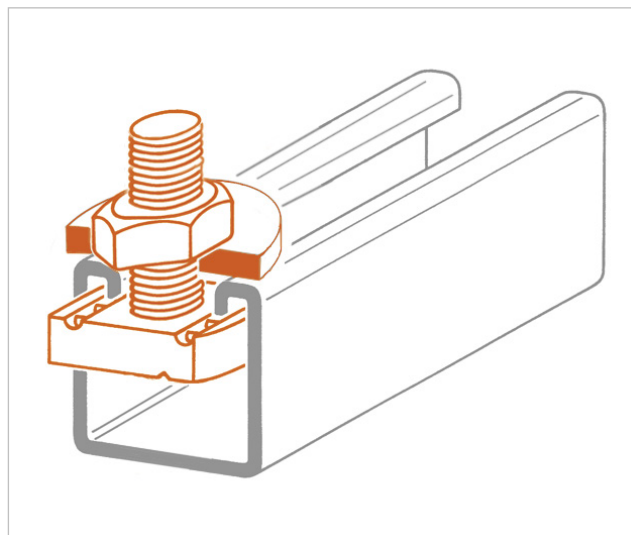
Square nut with stud and washer for heavy duty strut channels

APPLICATION

Used for connections on PF3 and PF4 strut channels.

FEATURES AND BENEFITS

- > It can be inserted **anywhere on the strut channel** with a simple 90° rotation.
- > Provided with washer, nut and stud.



COD	TYPE	Washer	A	B	C	D	E
162340	DMPR 8X30	40X3	M8	6	36	20	30
162342	DMPR 8X60	40X3	M8	6	36	20	60
162350	DMPR 10X30	40X3	M10	7,5	36	20	30
162352	DMPR 10X60	40X3	M10	7,5	36	20	60

INDUSTRIAL FIXING SYSTEMS

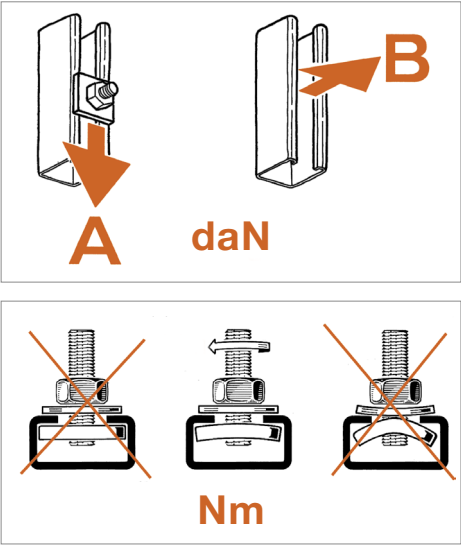
CONNECTION PARTS

MATERIALS TECHNICAL DATA

NUT AND ITS COMPONENTS

Steel DD11 EN 10111 with electro zinc plating 7-8 µm

RECOMMENDED LOADS



Recommended load is the average resistance loads with a safety coefficient. 1 daN=1 kg.

A - B = Recommended loads **Nm** = Tightening torque

PF3 - PF4			
TYPE	A	B	Nm
DMPR 8X30	70	240	25
DMPR 8X60	70	240	25
DMPR 10X30	70	330	25
DMPR 10X60	70	330	25

PACKAGING

In cardboard box

RELATED ITEMS

- > PF3 and PF4 strut channels
- > Threaded rods
- > Pipe clamps

DATE 06-2023 REV. 00

The current technical data sheet substitutes and cancels the previous ones. The details provided fit our current knowledge of the product. It cannot lead us to any sort of responsibility or compensation.

Gia S.p.A. reserves the right of changing technical features and molds without notice.

This company is subject to "Ethica Global Investments S.p.A." management.

Gia S.p.A. – Via Sac. A. Cremona, 12 – 28069 Trecate (NO) – www.gia.it