

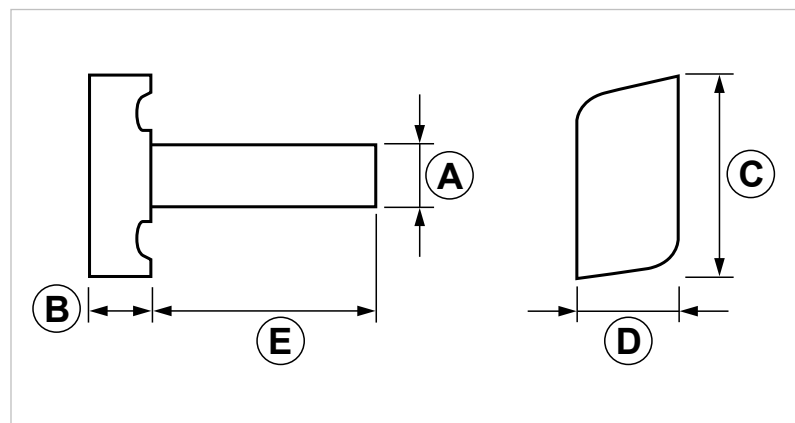
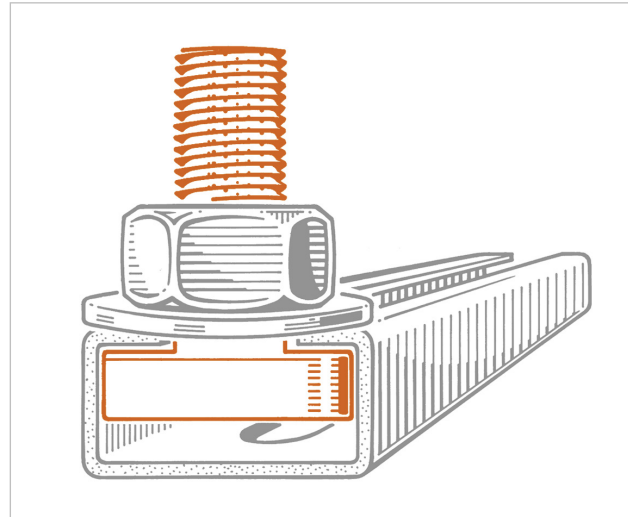
DMP T-head bolt for heavy duty strut channels

APPLICATION

Used for connections on PF3 and PF4 strut channels.

FEATURES AND BENEFITS

- > It can be inserted **anywhere on the strut channel** with a simple 90° rotation.
- > Together with nut and washer it creates a solid male threaded ending.



COD	TYPE	A	B	C	D	E
162330	DMP 8	M8	10	35	12	30
162331	DMP 10	M10	10	35	12	30
162332	DMP 12	M12	10	35	12	30

INDUSTRIAL FIXING SYSTEMS

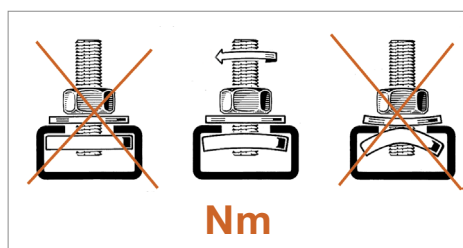
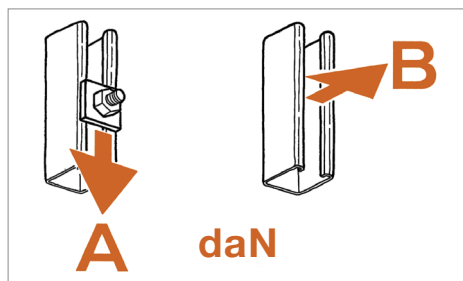
CONNECTION PARTS

MATERIALS TECHNICAL DATA

BOLT

Steel 5.6 EN ISO 898-1 with electro zinc plating 7-8 μm

RECOMMENDED LOADS



Recommended load is the average resistance loads with a safety coefficient. 1 daN=1 kg.

A - B = Recommended loads Nm = Tightening torque

PF3 - PF4			
TYPE	A	B	Nm
DMP 8	70	240	25
DMP 10	70	330	40
DMP 12	80	330	40

PACKAGING

In polyethylene bags

RELATED ITEMS

- > PF3 and PF4 strut channels
- > Threaded rods
- > Pipe clamps

DATE 06-2023 REV. 00

The current technical data sheet substitutes and cancels the previous ones. The details provided fit our current knowledge of the product. It cannot lead us to any sort of responsibility or compensation.

Gia S.p.A. reserves the right of changing technical features and molds without notice.

This company is subject to "Ethica Global Investments S.p.A." management.

Gia S.p.A. – Via Sac. A. Cremona, 12 – 28069 Trecate (NO) – www.gia.it