

DM

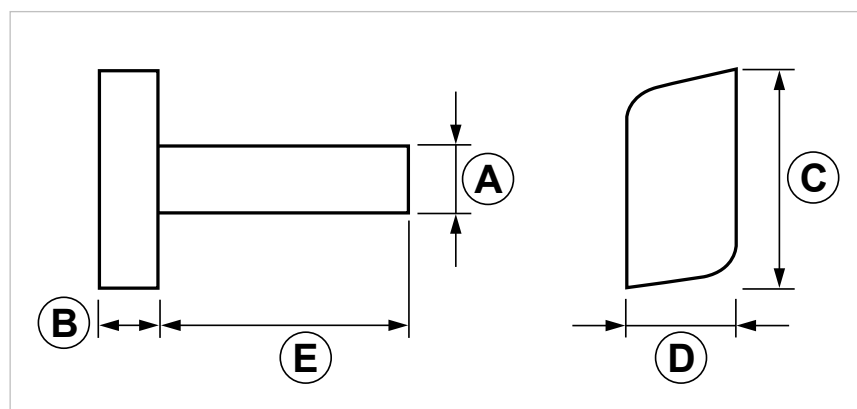
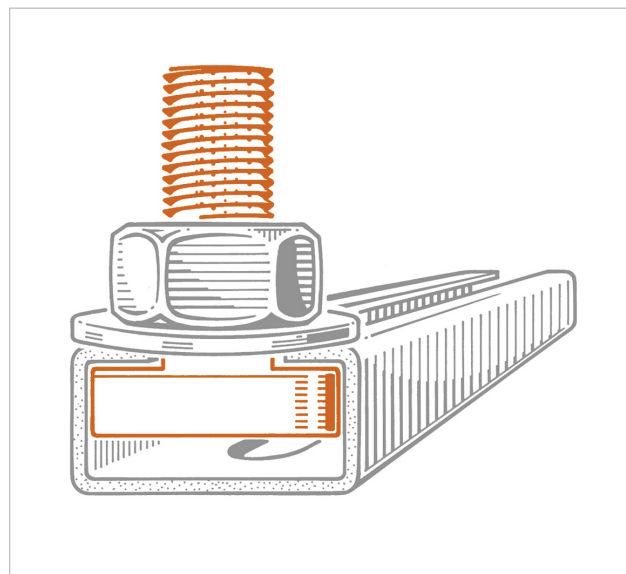
T-head bolt for light duty strut channels

APPLICATION

Connection piece for **PF/PF1/PF7/PF2** strut channels.

FEATURES AND BENEFITS

- > It can be placed **anywhere on the strut channel** by making a **simple 90° rotation**.
- > Together with nut and washer it creates a solid male threaded end.



COD	TYPE	A	B	C	D	E
162290	DM 8	M8	7	26	13	30
162300	DM 10	M10	7	26	13	30
162310	DM 12	M12	7	26	13	30

GRIP LIGHT DUTY FIXING SYSTEM

CONNECTION PARTS

MATERIALS TECHNICAL DATA

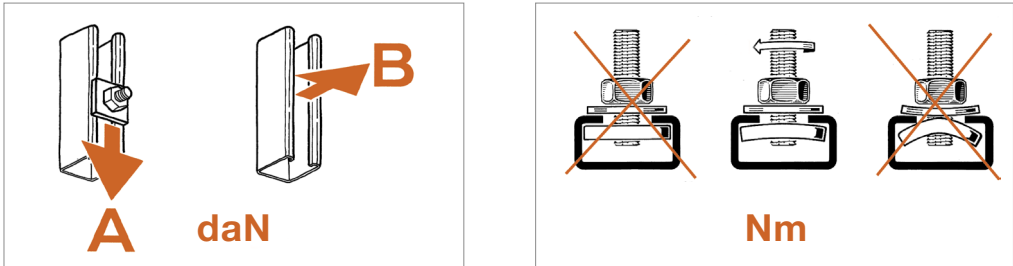
BOLT

Steel DD11 EN 10111

RECOMMENDED LOADS

Recommended load is the average resistance loads with a safety coefficient. 1 daN=1 kg.

A - B = recommended loads **Nm** = Tightening torque



TYPE	PF			PF1			PF7			PF2		
	A	B	Nm	A	B	Nm	A	B	Nm	A	B	Nm
DM 8	70	250	20	80	350	20	80	350	20	80	350	20
DM 10	70	280	40	70	300	40	70	300	40	70	300	40
DM 12	80	280	40	80	300	50	80	300	50	80	300	50

PACKAGING

In polyethylene bags

RELATED ITEMS

- > Pipe clamps
- > BF - Threaded rod
- > Grip strut channels

DATE 06-2023 REV. 01

The current technical data sheet substitutes and cancels the previous ones. The details provided fit our current knowledge of the product. It cannot lead us to any sort of responsibility or compensation.

Gia S.p.A. reserves the right of changing technical features and molds without notice.

This company is subject to "Ethica Global Investments S.p.A." management.

Gia S.p.A. – Via Sac. A. Cremona, 12 – 28069 Trecate (NO) – www.gia.it