

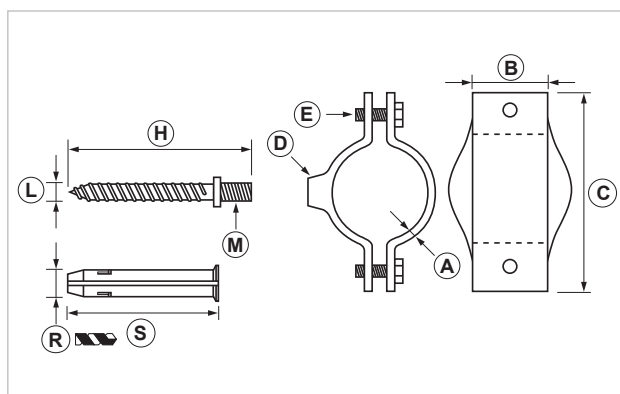
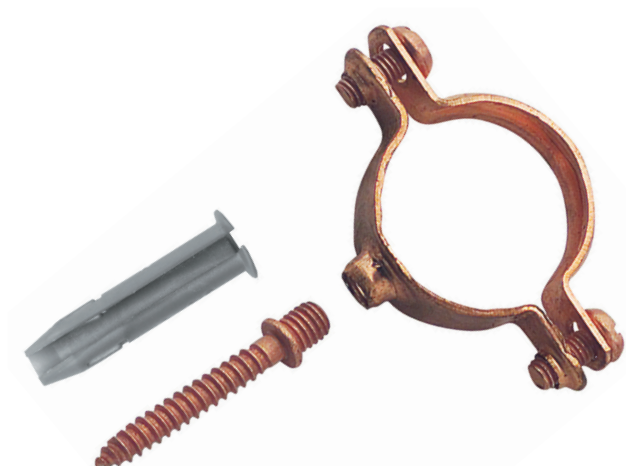
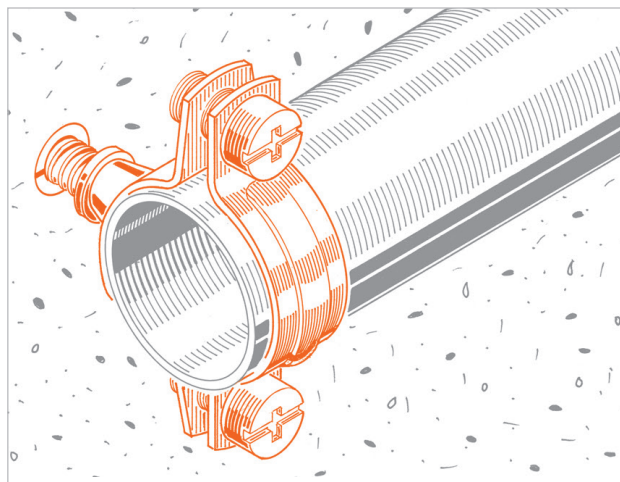
### CR Copper pipe clamp

#### APPLICATION

Copper pipe lines fastening.

#### FEATURES AND BENEFITS

- > It prevents electrolysis events, which may damage the copper pipe line
- > Thanks to the stiffening ribs, it ensures a **solid fixing**.
- > The locking screws - made of copper-coated brass - guarantee the **maximum stress resistance and a good-looking result**.
- > The Giolli plug makes it **handy, reliable and suitable for every kind of masonry**.



COD	TYPE	For pipes Ø mm	A	B	C	D	E	H	L	M	R	S	Notes
090030	CR 12	12	1	10	38	M6	TC 5X10	38	5	M6X6	6	30	
090040	CR 14	14	1	10	38	M6	TC 5X10	38	5	M6X6	6	30	
090060	CR 15/16	15-16	1	10	42	M6	TC 5X10	38	5	M6X6	6	30	
090070	CR 18	18	1	10	42	M6	TC 5X10	38	5	M6X6	6	30	
090090	CR 22	22	1	10	45	M6	TC 5X10	38	5	M6X6	6	30	
090130	CR 28	28	1	10	56	M6	TC 5X10	38	5	M6X6	6	30	
090150	CR 35	35	1	12	67	M6	TC 5X10	38	5	M6X6	6	30	
090160	CR 42	42	1	11	79	M6	TC 5X10	-	-	-	-	-	*
090170	CR 54	54	1,20	14	99	M6	TC 5X10	-	-	-	-	-	*

\* This item is sold without the wall fixing kit (central screw + Giolli plug)

# COPPER PIPE CLAMPS

## PIPE CLAMPS AND PIPE LINES FIXINGS

### MATERIALS TECHNICAL DATA

#### PIPE CLAMP

Copper EN 1652

#### LOCKING SCREW

Copper-coated brass EN 12164 - Socket head combined shear screw

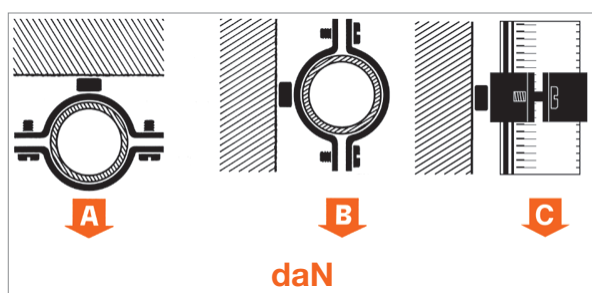
#### PLUG

PP Polypropylene

#### BASE MATERIAL

Concrete - Solid and hollow brick masonry

### RECOMMENDED LOADS



Recommended load is the average resistance load with a safety coefficient.

Data expressed in daN. 1 daN=1 kg

TYPE	A	B	C
CR 12	40	30	30
CR 14	40	30	30
CR 15/16	40	30	30
CR 18	40	30	30
CR 22	40	30	30
CR 28	40	30	30
CR 35	40	30	30
CR 42	40	30	30
CR 54	40	30	30

### PACKAGING

In order to install the plug properly, make a hole perpendicularly to the base support using the right drill bit. Before installing the plug make sure the hole is clean and all the drilling dust has been removed.

We recommend not to use an impact drill while making the hole on an hollow brick wall in order to prevent the internal bulkheads break. Eventually, fasten nut and pipe clamp.

### PACKAGING

In polyethylene bags

### PACKAGING

> GIPROFIL

> GIDADO

### DATA 09-2022 REV. 01

The current technical data sheet substitutes and cancels the previous ones. The details provided fit our current knowledge of the product. It cannot lead us to any sort of responsibility or compensation.

Gia S.p.A. reserves the right of changing technical features and molds without notice.

This company is subject to "Ethica Global Investments S.p.A." management.

Gia S.p.A. – Via Sac. A. Cremona, 12 – 28069 Trecate (NO) – [www.gia.it](http://www.gia.it)