

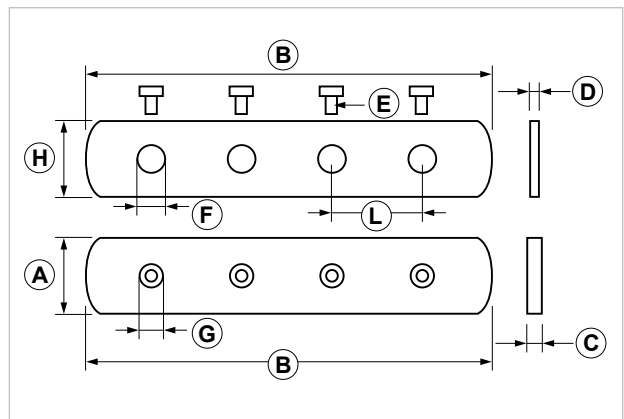
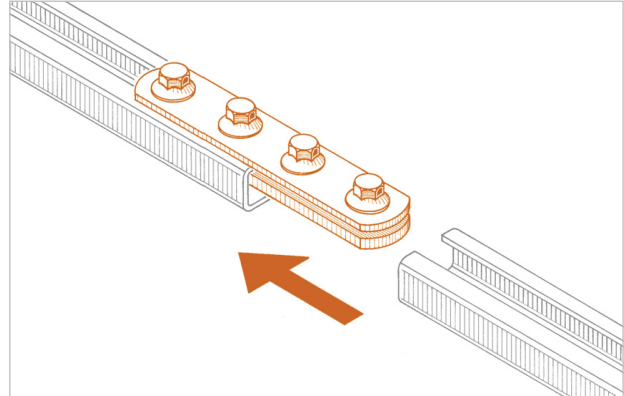
CON Strut channels connection piece

APPLICATION

Used to connect **PF / PF1 / PF7 / PF2** strut channels or parts of them.

FEATURES AND BENEFITS

- > It can be used on either side of the strut channel, the empty one and the one with loops.
- > It is composed of a threaded plate, a plate with through holes and TE bolts with related washers.



COD	TYPE	A	B	C	D	E	F	G	H	L
162400	CON	26	135	5	3	M8x14	9,5	M8	30	35

MATERIALS TECHNICAL DATA

CONNECTION PIECE

Steel DD11 EN 10111 with electro zinc plating 7-8 µm

PACKAGING

In polyethylene bags

RELATED ITEMS

> Strut channels

DATE 06-2023 REV. 01

The current technical data sheet substitutes and cancels the previous ones. The details provided fit our current knowledge of the product. It cannot lead us to any sort of responsibility or compensation.

Gia S.p.A. reserves the right of changing technical features and molds without notice.

This company is subject to "Ethica Global Investments S.p.A." management.

Gia S.p.A. – Via Sac. A. Cremona, 12 – 28069 Trecate (NO) – www.gia.it