

### CLIPPO

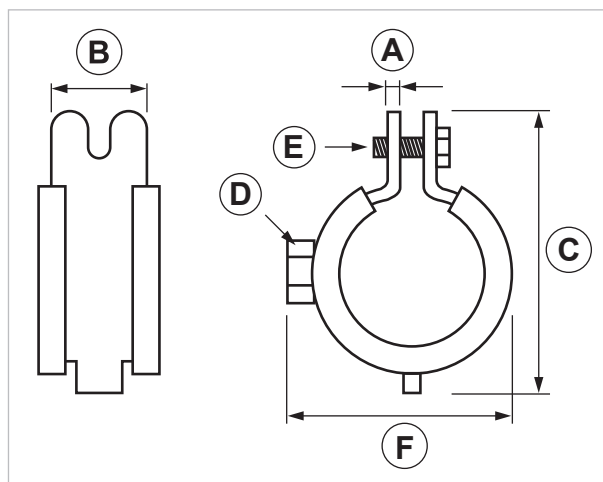
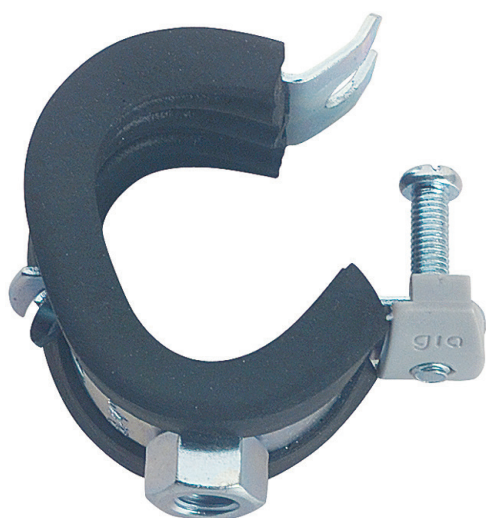
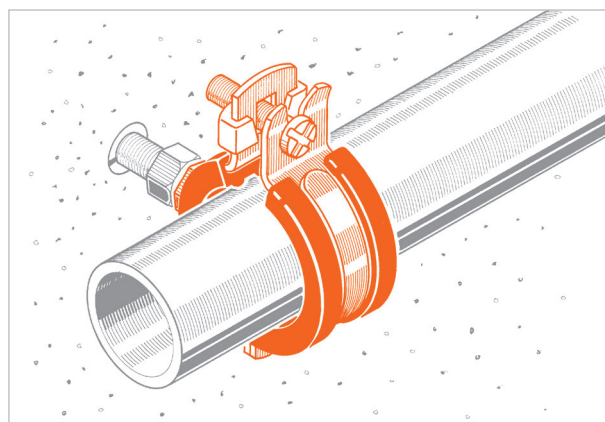
#### Hinged pipe clamp with EPDM rubber

#### APPLICATION

Suitable for fixing pipe lines that are to be insulated up to 2" size.

#### FEATURES AND BENEFITS

- > The **clip-on system** speeds up the tightening of the pipe so that you just have to tighten the screw that is already set on it.
- > The black EPDM rubber ensures further **insulation uniformity around the whole pipe circumference**, and the reduction of the noise that is transmitted by the pipe to the support.
- > **Handy**: it is made up of two light duty half-pipe clamps - made of galvanized steel with an electro-welded nut and hinged together - which are provided together with a black EPDM rubber strip and a coupling system.



COD	TYPE	For pipe lines Ø mm	A	B	C	D	E	F
081000	CLIPPO 1/4"	12 - 14	1,5	20	45	M8	M5x25	34
081010	CLIPPO 3/8"	15 - 18	1,5	20	50	M8	M5x25	39
081020	CLIPPO 1/2"	20 - 23	1,5	20	54	M8	M5x25	45
081030	CLIPPO 3/4"	25 - 28	1,5	20	58	M8	M5x25	50
081040	CLIPPO 1"	32 - 35	1,5	20	66	M8	M5x25	57
081050	CLIPPO 1 1/4"	40 - 43	1,5	20	73	M8	M5x25	64
081060	CLIPPO 1 1/2"	48 - 50	1,5	20	81	M8	M5x25	71
081070	CLIPPO 54	50 - 54	1,5	20	96	M8	M5x25	86
081080	CLIPPO 2"	60 - 63	1,5	20	96	M8	M5x25	86

# INSULATED PIPE CLAMPS

## PIPE CLAMPS AND PIPE LINES FIXINGS

### MATERIALS TECHNICAL DATA

#### PIPE CLAMP

Steel DD11 (material. N. 1.0332) DIN EN 10111 - With electro zinc-plating 7-8 µm

#### JOINT THREADING

M8

#### LOCKING SCREWS

Steel 4.8 EN ISO 898.1 with electro zinc-plating 7-8 µm  
Hex head combined shear screw

#### SHEATH

Halogen-free EPDM rubber

#### ACOUSTIC INSULATION

Noise reduction

#### TEMPERATURE

-35°C / +125°C

#### HARDNESS - SHORE A

55 + / - 5

#### BREAKAGE LOAD

5 MPa min.

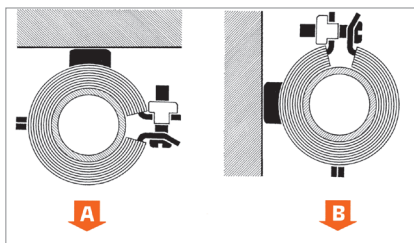
#### CONDUCTIVITY

0,3 W/Km

#### FIRE RESISTANCE

"E" Class - EN 13501

### RECOMMENDED LOADS



Data expressed in daN. 1 daN=1 kg

TYPE	A	B
CLIPPO (1/4" - 2")	70	60

Tests were carried out in technical laboratory with a dynamo-metric machine. For wall fixing, stick to the strength characteristics of the plug or the connecting support. Recommended load is the average resistance loads with a safety coefficient.

### PACKAGING

In cardboard box

### DATA 09-2022 REV. 01

The current technical data sheet substitutes and cancels the previous ones. The details provided fit our current knowledge of the product. It cannot lead us to any sort of responsibility or compensation.

Gia S.p.A. reserves the right of changing technical features and molds without notice.

This company is subject to "Ethica Global Investments S.p.A." management.

Gia S.p.A. – Via Sac. A. Cremona, 12 – 28069 Trecate (NO) – [www.gia.it](http://www.gia.it)