



# FLIP SYSTEM

EASY | FAST | STRONG

FAST LOCKING PIPE CLAMP  
IN POLYAMIDE 6.6



IT TAKES  
**JUST a CLICK,**  
WITH NO TOOLS NEEDED.



sistemi di fissaggio brevettati





# It takes a **CLICK** to fasten a **FLIP**

## Fast locking pipe clamp

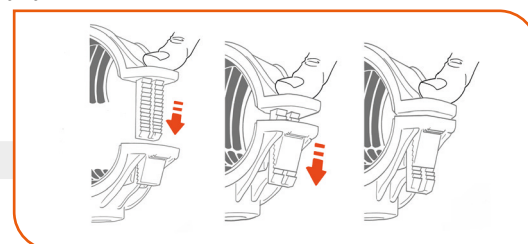


### PRODUCT

- > Polyamide 6.6 pipe clamp, stabilized against UV rays, complete with a brass insert and a vibration-proof sheath made of EPDM rubber thermoplastic elastomer.
- > Composed of two half-clamps that quickly close by simple fingers pressure.
- > Suitable for all kinds of pipe lines, and available in three different colors - grey, yellow and brown.
- > Apriflip is the extracting tool needed to uninstall Flip pipe clamps.

### BENEFITS

- > Resistant to UV rays and saline corrosion.
- > Isophonic for noise reduction.
- > Hygroscopic, it absorbs and releases water based on temperature, in order to guarantee product flexibility and strength.
- > Resistant to chemical agents.
- > A single clamp can be used for all materials (stainless steel, carbon steel, copper, PVC, PE , PP, multilayer materials...).
- > Easy to lock: no tools needed.
- > Both fixed and sliding points can be created on the same system by keeping the pipe clamp more or less tightened to the pipe.



### RECOMMENDED LOADS

MODEL	Ø	3/8	1/2	3/4	1	1 - 1/4	1 - 1/2	2	2 - 1/2	3	4	5
FLIP	Tensile strength	45	85	90	120	120	130	150	170	170	-	-
	Shear	70	72	75	75	75	70	65	45	40	-	-
FLIP R FLAT	Tensile strength	65	90	100	100	100	100	100	170	170	-	-
	Shear	65	85	85	85	85	90	90	120	120	-	-
FLIP SI SUPER ISOPHONIC	Tensile strength	-	-	-	-	-	-	-	-	170	130	180
	Shear	-	-	-	-	-	-	-	-	40	85	130

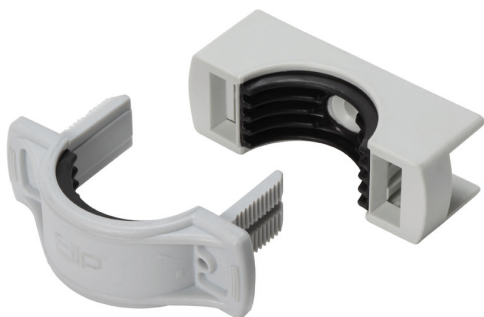
A safety coefficient equal to 3 was applied. Ask for the technical data sheets for complete data.

# FLIP SYSTEM - THE PRODUCT RANGE



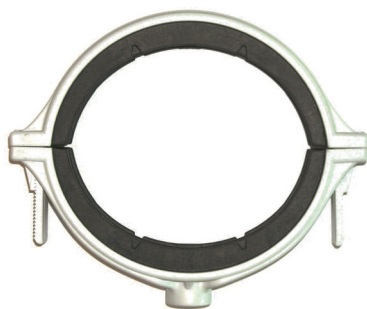
## FLIP

with a traditional shape, it is available either with or without the related fixing system - composed of threaded hammer screw and Giolli plug - and in 3 color versions: grey, brown or yellow.



## FLIP-R FLAT

the flat base makes it particularly suitable for wall fastening by reducing the distance between the pipe line and the wall itself, and giving it greater stability. Fastening occurs via chipboard screw and plug. It is available without fixing system but in 3 color versions: grey, brown and yellow.



## FLIP-SI SUPER-ISOPHONIC

fast locking pipe clamp, particularly suitable for PP and PE drainage pipe lines. Its sheath, due to its shape and thickness, consistently reduces vibrations.

It can be used either with M8 or M10 threaded rod. It is available both in grey and brown version, in diameters of 90, 110 and 125.

## INSTALLATION



1. Make a hole in the wall and insert the first half-clamp with the pre-selected fixing system.

2. Lean the pipe line against the first half-clamp, set the second half and press it in the right position.

3. Press Flip's sides with fingers in order to lock the pipe clamp.

4. Easy to remove: insert the extracting tool in the two holes at the side of the pipe clamp to open it.

### PIPE CLAMP'S FIXING SYSTEM

- > Plug and hammering screw to fasten Flip pipe clamps on masonry.
- > Connection parts: use of channel nuts, T-head bolts or fast locking nuts for Flip fixing on strut channels.
- > Chipboard screw and plug to fasten FLIP-R pipe clamp.
- > Self-locking kit to fasten FLIP-R pipe clamp on strut channels.

# FLIP SYSTEM - THE ACCESSORIES



## FLANGE

- > It enables to install systems on any kind of wall.
- > It can be fastened using either screws and plugs or structural adhesives.
- > Its use - thanks to its material and combined with Flip isophonic clamp - helps reducing vibrations making the system acoustic insulated.
- > It is available in two versions: M8 and M10.

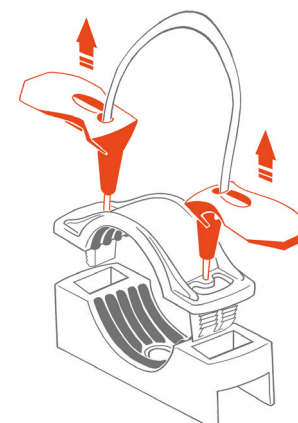
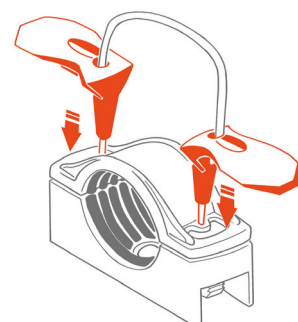


## APRIFLIP

Extracting tool used to open FLIPSYSTEM pipe clamp.

Thanks to this special accessory, opening the pipe clamp is very easy: you just need to insert the pins in the two holes at the two sides of the pipe clamp and pull. The mobile part is released and the pipe line can be removed.

Otherwise - using the same extracting technique - you can use two cross screwdrivers with Ø 3 mm of diameter.



## SELF-LOCKING KIT

- > Useful system to fix pipe clamp on a wide range of strut channels in an easy, fast and versatile way.
- > You only need to insert the M6 nut in the self-locking system, and the screw in the pipe clamp. Then screw it into the self-locking system.
- > The system can be inserted in any point of the strut channel.
- > It can be used in strut channels that are higher or as high as 15 mm, with a thickness between 1,5 and 2,5 mm, and the space needed to insert the object must be between 14 and 18 mm.
- > When assembling, the screw must be tightened enough to make sure the self-locking system is deformed, in order to have a good grip on the channel (Recommended Tightening Torque: 3 Nm).
- > Flip pipe clamp must be assembled with the self-locking system using screw and washer.

# FLIP SYSTEM

## FLIP - FAST LOCKING PIPE CLAMP WITH FIXING SYSTEM



GIA code	Description	Color	Inches	Ø Pipes (mm)	Connection	Pcs. /box	Pcs./pack
180005	FLIP 3/8" 14-18	Grey	3/8"	14-18	M8	2	100
180010	FLIP 1/2" 20-24	Grey	1/2"	20-24	M8	2	100
180015	FLIP 3/4" 25-30	Grey	3/4"	25-30	M8	2	60
180020	FLIP 1" 32-36	Grey	1"	32-36	M8	2	60
180025	FLIP 1 1/4" 38-44	Grey	1"-1/4"	38-44	M8	2	50
180030	FLIP 1 1/2" 44-50	Grey	1"-1/2"	44-50	M8-M10	2	50
180035	FLIP 2" 56-63	Grey	2"	56-62	M8-M10	2	40
180040	FLIP 2 1/2" 74-80	Grey	2"-1/2"	74-80	M8-M10	2	30
180045	FLIP 3" 84-90	Grey	3"	83-90	M8-M10	2	20

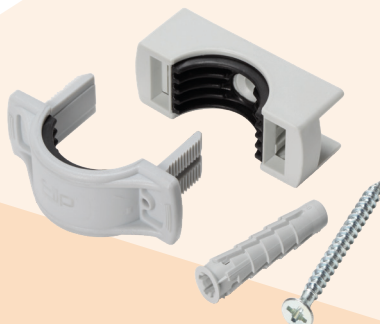
## FLIP1 - FAST LOCKING PIPE CLAMP



180105	FLIP1 3/8" 14-18	Grey	3/8"	14-18	M8	2	100
180110	FLIP1 1/2" 20-24	Grey	1/2"	20-24	M8	2	100
180115	FLIP1 3/4" 25-30	Grey	3/4"	25-30	M8	2	60
180120	FLIP1 1" 32-36	Grey	1"	32-36	M8	2	60
180125	FLIP1 1 1/4" 38-44	Grey	1"-1/4"	38-44	M8	2	50
180130	FLIP1 1 1/2" 44-50	Grey	1"-1/2"	44-50	M8-M10	2	50
180135	FLIP1 2" 56-63	Grey	2"	56-62	M8-M10	2	40
180140	FLIP1 2 1/2" 74-80	Grey	2"-1/2"	74-80	M8-M10	2	30
180145	FLIP1 3" 84-90	Grey	3"	84-90	M8-M10	2	20
180205	FLIP1G 3/8" 14-18	Yellow	3/8"	14-18	M8	2	40
180210	FLIP1G 1/2" 20-24	Yellow	1/2"	20-24	M8	2	40
180215	FLIP1G 3/4" 25-30	Yellow	3/4"	25-30	M8	2	30
180220	FLIP1G 1" 32-36	Yellow	1"	32-36	M8	2	30
180225	FLIP1G 1 1/4" 38-44	Yellow	1"-1/4"	38-44	M8	2	20
180230	FLIP1G 1 1/2" 44-50	Yellow	1"-1/2"	44-50	M8-M10	2	20
180235	FLIP1G 2" 56-63	Yellow	2"	56-62	M8-M10	2	20
180305	FLIP1M 3/8" 14-18	Brown	3/8"	14-18	M8	2	40
180310	FLIP1M 1/2" 20-24	Brown	1/2"	20-24	M8	2	40
180315	FLIP1M 3/4" 25-30	Brown	3/4"	25-30	M8	2	30
180320	FLIP1M 1" 32-36	Brown	1"	32-36	M8	2	30
180325	FLIP1M 1 1/4" 38-44	Brown	1"-1/4"	38-44	M8	2	20
180330	FLIP1M 1 1/2" 44-50	Brown	1"-1/2"	44-50	M8-M10	2	20
180335	FLIP1M 2" 56-63	Brown	2"	56-62	M8-M10	2	20
180340	FLIP1M 2 1/2" 74-80	Brown	2"-1/2"	74-80	M8-M10	2	10



## FLIP RW - FLAT FAST LOCKING PIPE CLAMP WITH FIXING SYSTEM

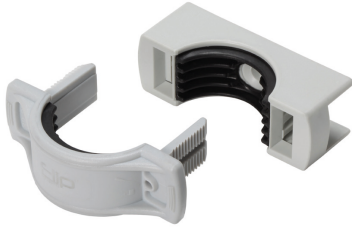


180705	FLIPRW 3/8" 14-18	Grey	3/8"	14-18	6x70	2	100
180710	FLIPRW 1/2" 20-24	Grey	1/2"	20-24	6x70	2	100
180715	FLIPRW 3/4" 25-30	Grey	3/4"	25-30	6x70	2	60
180720	FLIPRW 1" 32-36	Grey	1"	30-36	6x70	2	60
180725	FLIPRW 1 1/4" 38-44	Grey	1"-1/4"	38-44	6x70	2	50
180730	FLIPRW 1 1/2" 44-50	Grey	1"-1/2"	44-50	6x70	2	50
180735	FLIPRW 2" 56-63	Grey	2"	56-62	6x70	2	40
180740	FLIPRW 2 1/2" 74-80	Grey	2"-1/2"	74-80	6x70	2	30
180745	FLIPRW 3" 84-90	Grey	3"	84-90	6x70	2	20



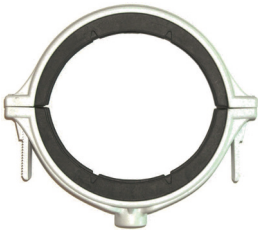
# FLIP SYSTEM

## FLIP R - FLAT FAST LOCKING PIPE CLAMP



GIA code	Description	Color	Inches	Ø Pipes (mm)	Connection	Pcs./ box	Pcs./ pack
180405	FLIPR 3/8" 14-18	Grey	3/8"	14-18	6x70	2	100
180410	FLIPR 1/2" 20-24	Grey	1/2"	20-24	6x70	2	100
180415	FLIPR 3/4" 25-30	Grey	3/4"	25-30	6x70	2	60
180420	FLIPR 1" 32-36	Grey	1"	30-36	6x70	2	60
180425	FLIPR 1 1/4" 38-44	Grey	1"-1/4"	38-44	6x70	2	50
180430	FLIPR 1 1/2" 44-50	Grey	1"-1/2"	44-50	6x70	2	50
180435	FLIPR 2" 56-63	Grey	2"	56-62	6x70	2	40
180440	FLIPR 2 1/2" 74-80	Grey	2"-1/2"	74-80	6x70	2	30
180445	FLIPR 3" 84-90	Grey	3"	84-90	6x70	2	20
180505	FLIPRG 3/8" 14-18	Yellow	3/8"	14-18	6x70	2	40
180510	FLIPRG 1/2" 20-24	Yellow	1/2"	20-24	6x70	2	40
180515	FLIPRG 3/4" 25-30	Yellow	3/4"	25-30	6x70	2	30
180520	FLIPRG 1" 32-36	Yellow	1"	32-36	6x70	2	30
180525	FLIPRG 1 1/4" 38-44	Yellow	1-1/4"	38-44	6x70	2	20
180530	FLIPRG 1 1/2" 44-50	Yellow	1-1/2"	44-50	6x70	2	20
180535	FLIPRG 2" 56-63	Yellow	2"	56-62	6x70	2	20
180605	FLIPRM 3/8" 14-18	Brown	3/8"	14-18	6x70	2	40
180610	FLIPRM 1/2" 20-24	Brown	1/2"	20-24	6x70	2	40
180615	FLIPRM 3/4" 25-30	Brown	3/4"	25-30	6x70	2	30
180620	FLIPRM 1" 32-36	Brown	1"	32-36	6x70	2	30
180625	FLIPRM 1 1/4" 38-44	Brown	1-1/4"	38-44	6x70	2	20
180630	FLIPRM 1 1/2" 44-50	Brown	1-1/2"	44-50	6x70	2	20
180635	FLIPRM 2" 56-63	Brown	2"	56-62	6x70	2	20
180640	FLIPRM 2 1/2" 74-80	Brown	2-1/2"	74-80	6x70	2	10

## FLIP SI - SUPER ISOPHONIC FAST LOCKING PIPE CLAMP



180845	FLIP SI 90 (84-90)	Grey	3	84-90	M8-M10	1	20
180850	FLIP SI 110 (100-110)	Grey	4	100-110	M10	1	15
180855	FLIP SI 125 (125-135)	Grey	5	125-135	M10	1	15
180945	FLIP SIM 90 (84-90)	Brown	3	84-90	M8-M10	1	20
180950	FLIP SIM 110 (100-110)	Brown	4	100-110	M10	1	15
180955	FLIP SIM 125 (125-135)	Brown	5	125-135	M10	1	15

## FLIP ACCESSORIES



181100	AFLIP - Flip Opening Tool	1	10
181050	FX8 - Flange for M8 connection	1	30
181055	FX10 - Flange for M10 connection	1	30
181060	BLOC - Self-locking kit for FlipR pipe clamp	1	30
181070	TNY10 - Plug 10 and screw 6x70 for FLIP-R pipe clamp fixing	10	200