

ANS 90 2D

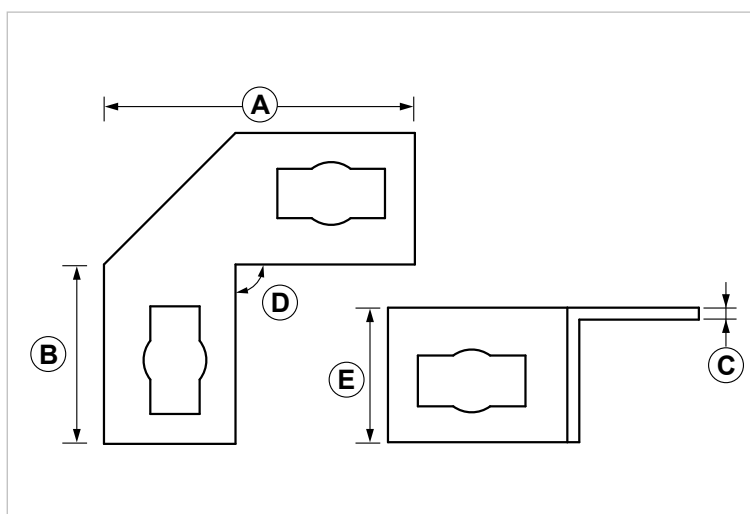
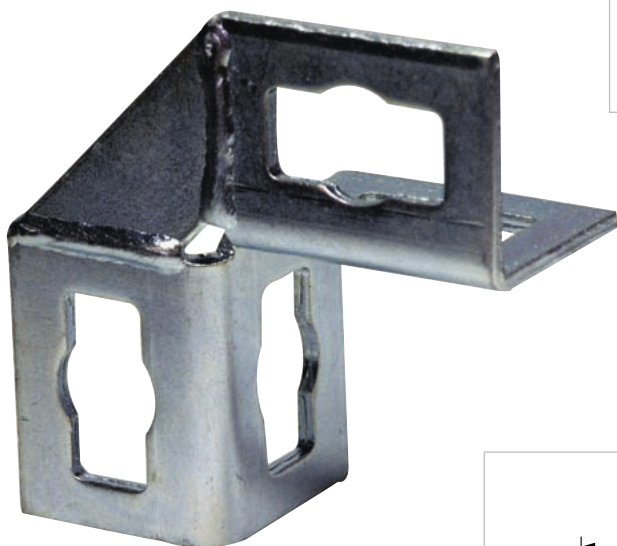
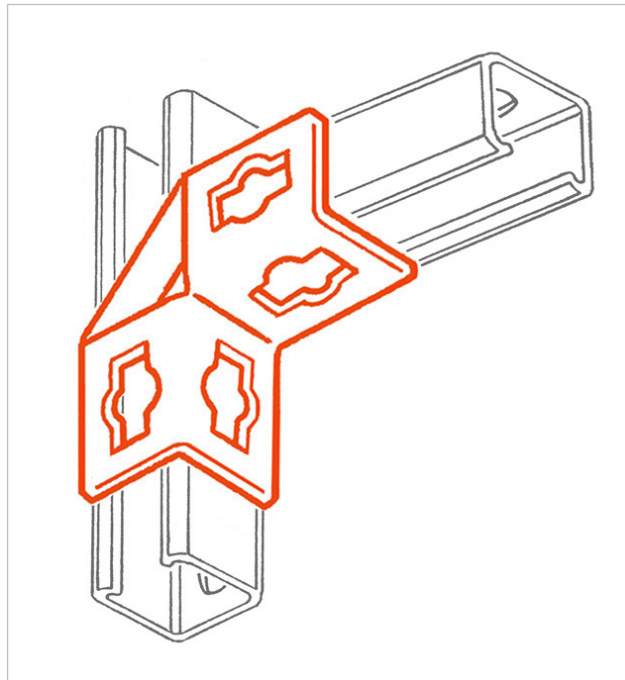
2D quick connection angle fitting

APPLICATION

It is used to compose brackets and supporting structures without welding.

FEATURES AND BENEFITS

- > Support brackets **for PF3 and PF4 strut channels.**
- > The exclusive shape of the loops - designed to fit the so called "JBR 10" bolt (cod. 161950) - makes **connection to the strut channel fast and easy.**
- > The loops are set on each side of the rail so that the strut channel can be installed with **a 90° rotation** as well.
- > Its 2-direction shape guides the installation, allowing to set the strut channel in the desired position.



COD	TYPE	A	B	C	D	E
161035	ANS 90 2D	103	58	4	90°	45

INDUSTRIAL FIXING SYSTEMS

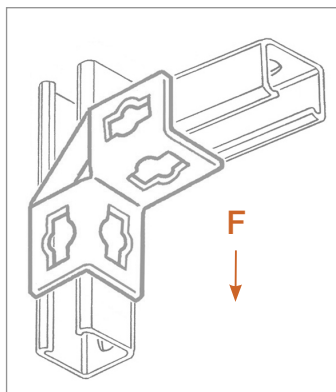
ANGLE BRACKETS AND FITTINGS FOR HEAVY DUTY STRUT CHANNELS

MATERIALS TECHNICAL DATA

SQUARE NUT

Steel DD11 EN 10111 with electro zinc plating 7-8 µm EN ISO 12329

RECOMMENDED LOADS



TYPE	F
ANS 90 2D	300

Recommended load is the average resistance load with a safety coefficient.
1 daN=1 kg.

PACKAGING

In cardboard box

RELATED ITEMS

- > PF3 and PF4 strut channels
- > JBR 10 - Quick connection bolt

DATE 02-2023 REV. 01

The current technical data sheet substitutes and cancels the previous ones. The details provided fit our current knowledge of the product. It cannot lead us to any sort of responsibility or compensation.

Gia S.p.A. reserves the right of changing technical features and molds without notice.

This company is subject to "Ethica Global Investments S.p.A." management.

Gia S.p.A. – Via Sac. A. Cremona, 12 – 28069 Trecate (NO) – www.gia.it