

# GRIP LIGHT DUTY FIXING SYSTEM

## ANGLE BRACKETS AND CONNECTION PLATES

### ANGP GRIP

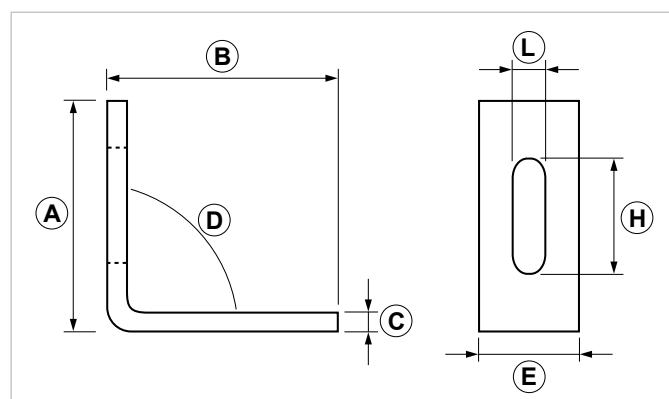
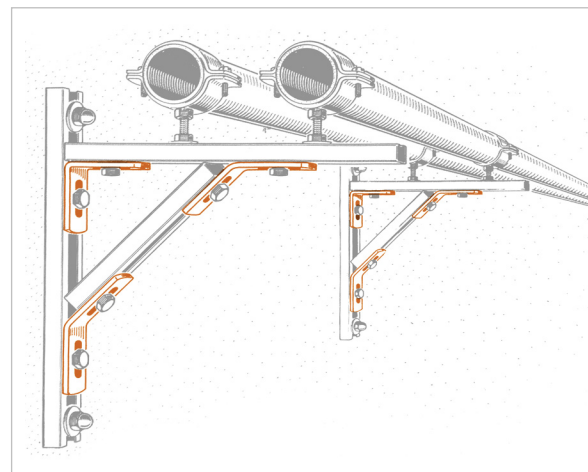
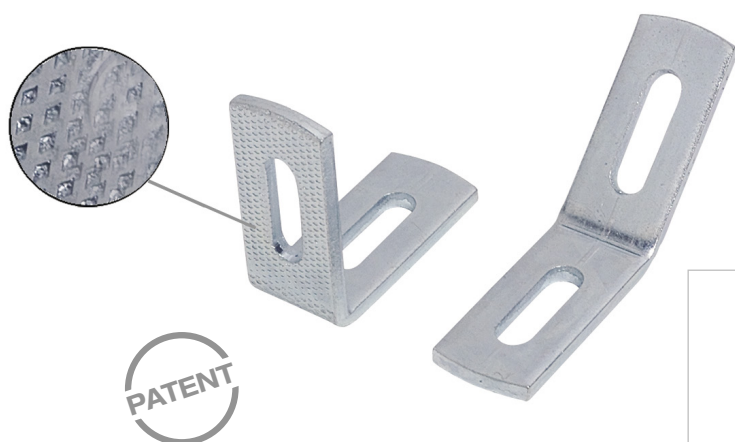
#### Heavy duty Grip angle bracket

#### APPLICATION

Used to create supporting brackets without welding.

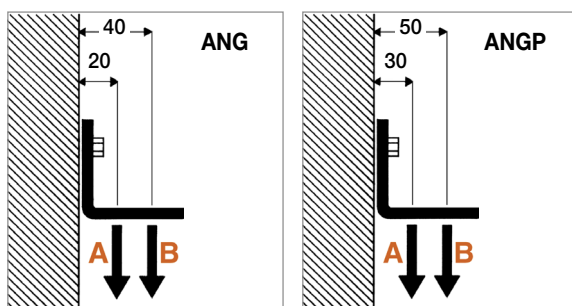
#### FEATURES AND BENEFITS

- > Used to make **90° or 45° connections** between **PF/PF1/PF7/PF2** strut channels.
- > It is **knurled** to prevent sliding.



COD	TYPE	For	A	B	C	D	E	H	L
161011	ANGP 90 GRIP	M8/M10	70	70	6	90	30	33	10,5
161111	ANGP 45 GRIP	M8/M10	70	70	6	135	30	33	10,5

#### RECOMMENDED LOADS



TYPE	A	B
ANG GRIP	140	80
ANGP GRIP	140	80

Recommended load is the average resistance loads with a safety coefficient.  
1 daN=1 kg.

A - B = Recommended loads

# GRIP LIGHT DUTY FIXING SYSTEM

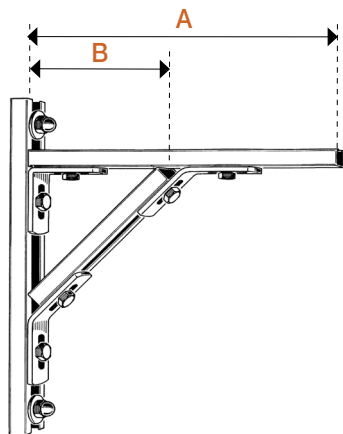
## ANGLE BRACKETS AND CONNECTION PLATES

### MATERIALS TECHNICAL DATA

#### ANGLE BRACKET

Steel DD11 EN 10111 with electro zinc plating 7-8 µm

#### LOADS FOR ANGLE BRACKET AND STRUT CHANNELS



##### Static loads

**Material:** DX 51 D - D D11

**F** = Concentrated load in daN - **Q** = evenly distributed load in daN

**Safety load** = 140 N/mm<sup>2</sup> (14 Kg./mm<sup>2</sup>) - Maximum deflection L/250

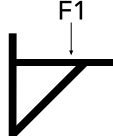
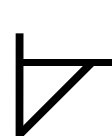
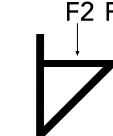
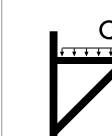
**Safety coefficient** = 1/2 sliding value.

For wall fastening please consider the supporting performance of the plug or the connection piece.

> Art. ANG 90, ANG 45, DR 8, BU 8 have been used for PF strut channels with a tightening torque of 30 Nm.

> Art. ANGP 90, ANGP 45, DR 10, BU 10 have been used for PF1 and PF7 strut channels with a tightening torque of 35 Nm.

> Art. ANGP 90, ANGP 45, DM 10, D 10 have been used for PF2 strut channels with a tightening torque of 60 Nm.

TYPE	LENGTH mm		 F1 = daN	 F1 = daN	 F2 = daN	 Q = daN
	A	B				
PF	350	240	110	45	80	110
	500	350	75	20	60	95
	800	600	32	10	30	45
PF1	350	240	135	75	85	135
	500	350	130	60	80	130
	750	500	100	30	75	110
	1000	800	60	20	40	70
PF7	350	240	140	75	95	140
	500	350	135	70	90	135
	750	500	110	45	85	115
	1000	800	80	20	50	80
PF2	500	300	150	85	110	150
	800	500	140	70	95	145
	1000	700	120	45	85	120
	1500	1000	90	20	55	90

### PACKAGING

In cardboard box

### RELATED ITEMS

- > Brackets and strut channels
- > Pipe clamps

### DATE 06-2023 REV. 01

The current technical data sheet substitutes and cancels the previous ones. The details provided fit our current knowledge of the product. It cannot lead us to any sort of responsibility or compensation.

Gia S.p.A. reserves the right of changing technical features and molds without notice.

This company is subject to "Ethica Global Investments S.p.A." management.

Gia S.p.A. – Via Sac. A. Cremona, 12 – 28069 Trecate (NO) – [www.gia.it](http://www.gia.it)