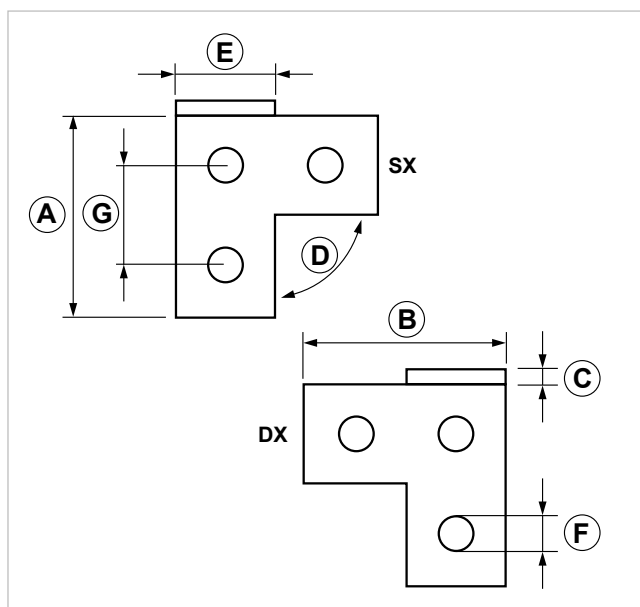
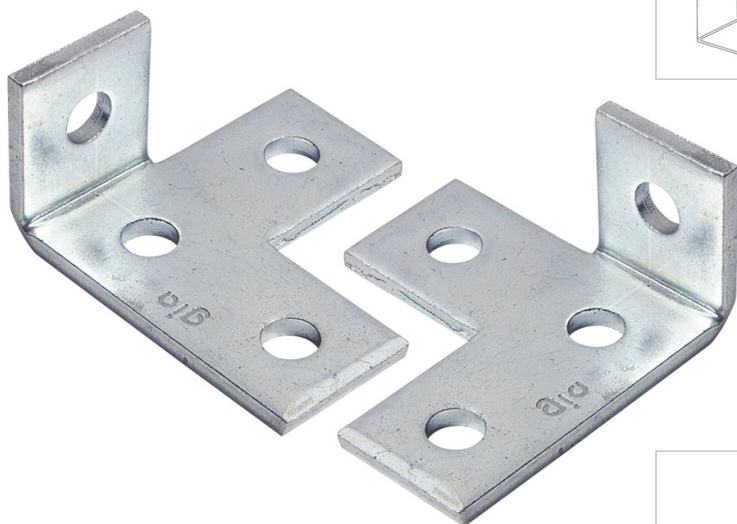
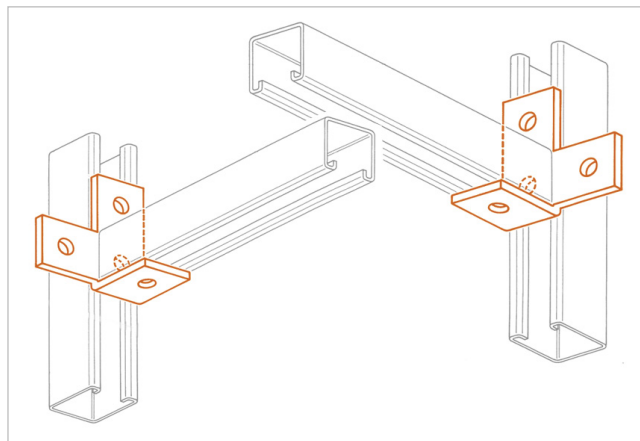


### ANGLE FITTING PLATE for heavy duty strut channels

#### APPLICATION

It is used to join PF3 and PF4 strut channels, or to set up 2-way, 3-ways and 4-way junctions.



COD	Type	Description	A	B	C	D	E	F	G
161610	RA 3 S	Left	95,5	88	6	90	40	14	48
161611	RA 3 D	Right	95,5	88	6	90	40	14	48

# INDUSTRIAL FIXING SYSTEMS

## ANGLE BRACKETS AND FITTINGS FOR HEAVY DUTY STRUT CHANNELS

### MATERIALS TECHNICAL DATA

#### PLATE

Steel DD11 EN 10111 with electro zinc-plating 7-8 µm

### PACKAGING

In cardboard box

### RELATED ITEMS

- > Heavy duty strut channels
- > Threaded rods
- > Pipe clamps

#### DATE 07-2023 REV. 01

The current technical data sheet substitutes and cancels the previous ones. The details provided fit our current knowledge of the product. It cannot lead us to any sort of responsibility or compensation.

Gia S.p.A. reserves the right of changing technical features and molds without notice.

This company is subject to "Ethica Global Investments S.p.A." management.

Gia S.p.A. – Via Sac. A. Cremona, 12 – 28069 Trecate (NO) – [www.gia.it](http://www.gia.it)