

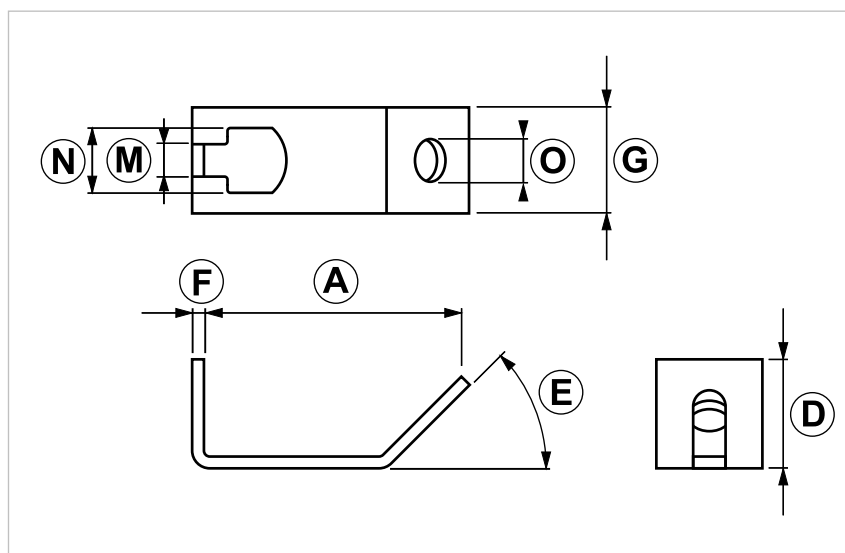
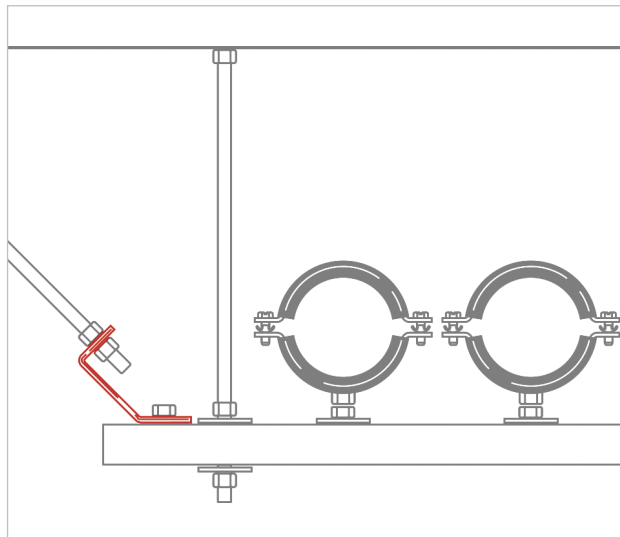
### ANG R Support angle bracket

#### APPLICATION

Suitable as wind-brace to strengthen structures and hanging loads with M10 threaded rods.

#### FEATURES AND BENEFITS

- > It allows to **adjust**, **hook** and **tighten** the threaded rod, using the hexagonal nuts.
- > In case of hanging strut channels it helps to **fight axial and lateral forces**.



COD	Type	A	D	E	F	G	M	N	O
161190	ANG R	86	34	45°	4	36	11	22	14,5

# INDUSTRIAL FIXING SYSTEMS

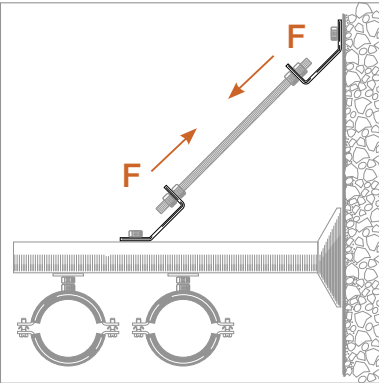
## ANGLE BRACKETS AND FITTINGS FOR HEAVY DUTY STRUT CHANNELS

### MATERIALS TECHNICAL DATA

#### ANGLE BRACKET

Steel DD11 EN 10111 with electro zinc plating 7-8 µm

#### RECOMMENDED LOADS



TYPE	F
ANG R	200

Recommended load is the average resistance load with a safety coefficient.

1 daN=1 kg

#### PACKAGING

In cardboard box

#### RELATED ITEMS

- > Threaded rods
- > Pipe clamps

#### DATE 07-2023 REV. 01

The current technical data sheet substitutes and cancels the previous ones. The details provided fit our current knowledge of the product. It cannot lead us to any sort of responsibility or compensation.

Gia S.p.A. reserves the right of changing technical features and molds without notice.

This company is subject to “Ethica Global Investments S.p.A.” management.

Gia S.p.A. – Via Sac. A. Cremona, 12 – 28069 Trecate (NO) – [www.gia.it](http://www.gia.it)