

GRIP LIGHT DUTY FIXING SYSTEM

ANGLE BRACKETS AND CONNECTION PLATES

ANG GRIP

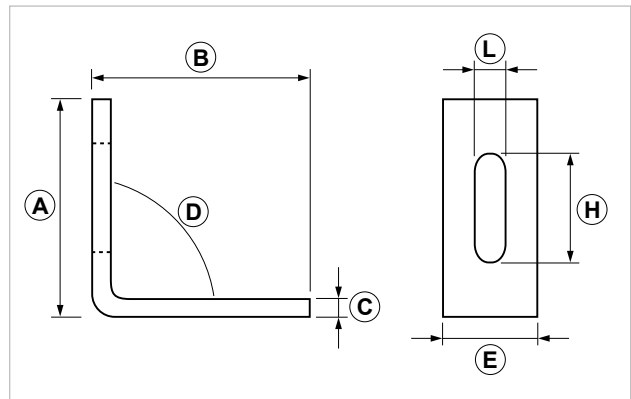
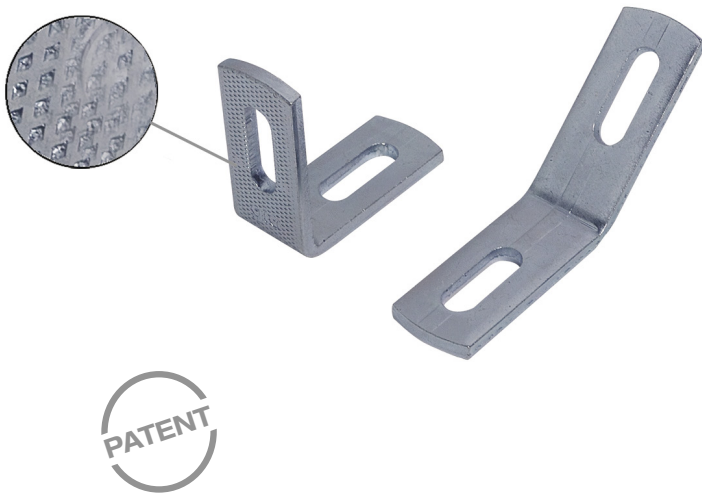
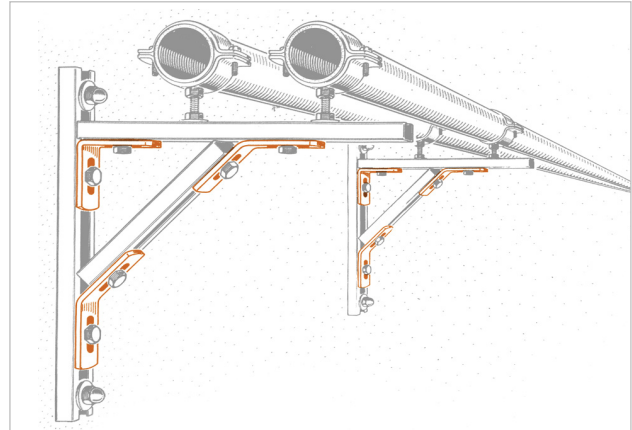
Grip angle bracket with M8 loops

APPLICATION

Used to create supporting brackets without welding.

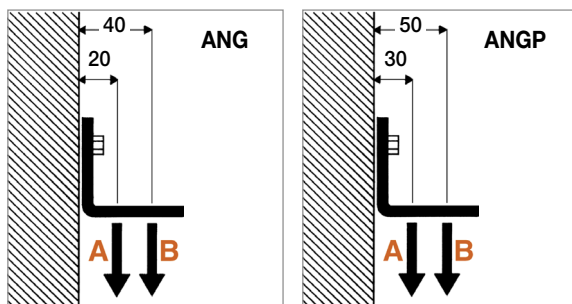
FEATURES AND BENEFITS

- > Used to make **90° or 45° connections** between **PF/PF1/PF7/PF2** strut channels.
- > It is **knurled** to prevent sliding.



COD	TYPE	For	A	B	C	D	E	H	L
161001	ANG 90 GRIP	M8	60	60	5	90	26	30	8,5
161101	ANG 45 GRIP	M8	55	55	5	135	26	30	8,5

RECOMMENDED LOADS



TYPE	A	B
ANG GRIP	140	80
ANGP GRIP	140	80

Recommended load is the average resistance loads with a safety coefficient.
1 daN=1 kg

A - B = Recommended loads

GRIP LIGHT DUTY FIXING SYSTEM

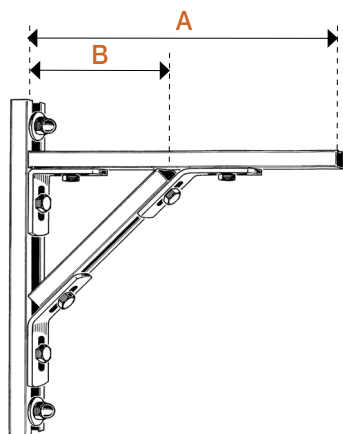
ANGLE BRACKETS AND CONNECTION PLATES

MATERIALS TECHNICAL DATA

ANGLE BRACKET

Steel DD11 EN 10111 with electro zinc plating 7-8 µm

LOADS FOR ANGLE BRACKET AND STRUT CHANNELS



Static loads

Material: DX 51 D - D D11

F = Concentrated load in daN - **Q** = evenly distributed load in daN

Safety load = 140 N/mm² (14 Kg./mm²) - Maximum deflection L/250

Safety coefficient = 1/2 sliding value.

For wall fastening please consider the supporting performance of the plug or the connection piece.

> Art. ANG 90, ANG 45, DR 8, BU 8 have been used for PF strut channels with a tightening torque of 30 Nm.

> Art. ANGP 90, ANGP 45, DR 10, BU 10 have been used for PF1 and PF7 strut channels with a tightening torque of 35 Nm.

> Art. ANGP 90, ANGP 45, DM 10, D 10 have been used for PF2 strut channels with a tightening torque of 60 Nm.

TYPE	LENGTH mm		F1		F2 F2		Q	
	A	B	F1 = daN	F1 = daN	F2 = daN	F2 = daN	Q = daN	Q = daN
PF	350	240	110	45	80	80	110	110
	500	350	75	20	60	60	95	95
	800	600	32	10	30	30	45	45
PF1	350	240	135	75	85	85	135	135
	500	350	130	60	80	80	130	130
	750	500	100	30	75	75	110	110
	1000	800	60	20	40	40	70	70
PF7	350	240	140	75	95	95	140	140
	500	350	135	70	90	90	135	135
	750	500	110	45	85	85	115	115
	1000	800	80	20	50	50	80	80
PF2	500	300	150	85	110	110	150	150
	800	500	140	70	95	95	145	145
	1000	700	120	45	85	85	120	120
	1500	1000	90	20	55	55	90	90

PACKAGING

In cardboard box

RELATED ITEMS

- > Brackets and strut channels
- > Pipe clamps

DATE 06-2023 REV. 01

The current technical data sheet substitutes and cancels the previous ones. The details provided fit our current knowledge of the product. It cannot lead us to any sort of responsibility or compensation.

Gia S.p.A. reserves the right of changing technical features and molds without notice.

This company is subject to "Ethica Global Investments S.p.A." management.

Gia S.p.A. – Via Sac. A. Cremona, 12 – 28069 Trecate (NO) – www.gia.it