

A 8 / 10

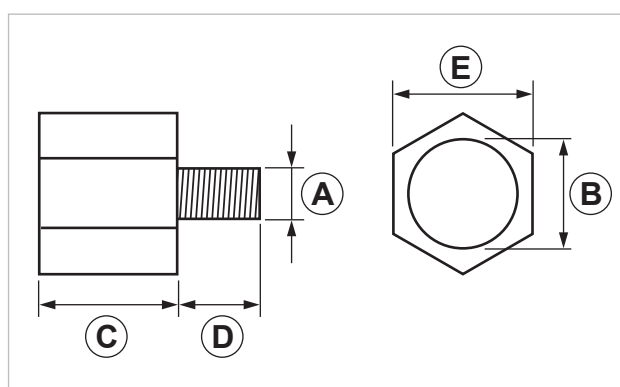
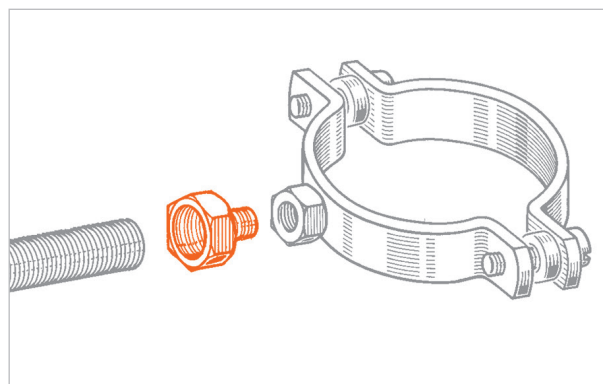
Reduction piece

APPLICATION

Used to connect items with different joints.

FEATURES AND BENEFITS

- > Suitable to connect 1/2" GAS threads with metric threads, or two metric threads together.



COD	TYPE	A	B	C	D	E
262901	A 8-10	M8	M10	12	7	17
262900	A 8-12	M8	M12	12	7	17
262601	A 8-1/2"	M8	G 1/2"	16	7	24
262902	A 10-8	M10	M8	12	10	13
262701	A 10-1/2"	M10	G 1/2"	16	10	24

REDUCTION SOCKET AND PIECE

PIPE CLAMPS AND PIPE LINES FIXINGS

MATERIALS TECHNICAL DATA

MATERIAL

Steel 4.8 EN ISO 898-1 with electro zinc plating 7-8 µm

PACKAGING

In cardboard box - 50 pieces

RELATED ITEMS

- > AD - Reduction socket
- > ANR - Reduction socket
- > CBF - Installation tool for threaded screws and rods

DATA 11-2022 REV. 01

The current technical data sheet substitutes and cancels the previous ones. The details provided fit our current knowledge of the product. It cannot lead us to any sort of responsibility or compensation.

Gia S.p.A. reserves the right of changing technical features and molds without notice.

This company is subject to "Ethica Global Investments S.p.A." management.

Gia S.p.A. – Via Sac. A. Cremona, 12 – 28069 Trecate (NO) – www.gia.it